



KR33 Series

(300–1200kVA)

- Computer room
- Data center
- Precision instrument
- Commercial facility
- Intelligent equipment
- Telecom system
- Industry

Advanced Technology:

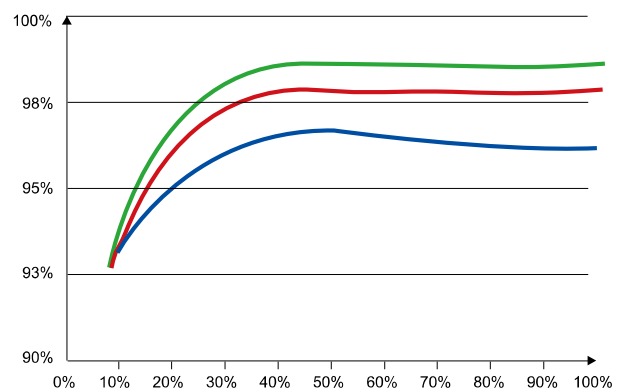
- Three level inverter technology
- Support parallel mode up to 9.6MVA
- External input/output transformer connection

Green Power:

- High AC/AC efficiency up to 97%
- ECO mode efficiency up to 99%
- High power factor up to 1
- Low THDi $\leq 2\%$

Flexible Design:

- Common battery bank sharing in parallel system
- Multiple communication interface
- 3-stage battery charging mode
- Self-load test function without load enables onsite commission
- Common bypass cabinet
- External input and output isolation transformer



Smart ECO Efficiency —
ECO Efficiency —
AC/AC Efficiency —

Specification:

| MODEL | KR33300 | KR33400 | KR33500 | KR33600 | KR33800 | KR331000 | KR331200 |
|----------------------------|---|---------|---------------|---------|--|---------------|----------|
| INPUT | | | | | | | |
| Rate Voltage | 380/400/415 | | | | | | |
| Voltage Range | 228–477 (-40%~+25%) | | | | | | |
| Phase | 3Ph+N+PE | | | | | | |
| Frequency Range (Hz) | 50/60±10% (±5% settable) | | | | | | |
| Power Factor | ≥ 0.99 | | | | | | |
| THDi | ≤ 2% full load, ≤ 4% half load, ≤ 5% 30% load | | | | | | |
| OUTPUT | | | | | | | |
| Input Voltage (Vac) | 380/400/415 (-25%~+20%) | | | | | | |
| Frequency Range | 50/60Hz±10% (±5% optional) | | | | | | |
| Phase | 3Ph+N+PE | | | | | | |
| OUTPUT | | | | | | | |
| Output Voltage (Vac) | 380/400/415±1% | | | | | | |
| Frequency (Hz) | 50/60±0.5% | | | | | | |
| THDv | Pure sine wave, THD<1% (linear load), THD<3% (nonlinear load) | | | | | | |
| PF | 0.9 (1.0 optional) | | | | | | |
| Max. Efficiency | 97% | | | | | | |
| Phase | 3Ph+N+PE | | | | | | |
| Overload | 110% load for 60 min , 125% load for 10 min, 150% load for 1 min | | | | | | |
| BATTERY | | | | | | | |
| Voltage (Vdc)* | 480 (12V battery from 32 to 44 cells settable) | | | | 528 (12V battery from 32 to 48 cells settable) | | |
| Charging Current (A) | 25–100 | | 25–200 | | | | |
| Battery Management | Self-load test function | | | | | | |
| OTHER | | | | | | | |
| Communication Interface | RS232, RS485, Dry contact, MODBUS, SNMP (optional) | | | | | | |
| Display | 7-inch touch screen+LED | | | | | | |
| Operating Temperature (°C) | -5–40 | | | | | | |
| Alarm | Input abnormal, battery low-voltage, output overload, UPS failure | | | | | | |
| Protection | Short-circuit, overload, over-temperature, battery under voltage, input under voltage | | | | | | |
| IP | IP20 | | | | | | |
| Noise (dB) | <75 | | | | | | |
| Altitude (m) | 1500 | | | | | | |
| Dimension (W×D×H) (mm) | 1000×900×1950 | | 1400×900×1950 | | 1900×900×1950 | 3000×900×1950 | |
| Weight (kg) | 750 | | 1100 | | 1450 | 2400 | |

◆ Specification is subject to change without prior notice.